

Reception and contingency planning at entry points



Tristan Bradfield
Heathrow Animal Reception Centre



ANIMAL
RECEPTION
CENTRE



CORPORATION
OF LONDON

ANIMAL RECEPTION CENTRE

ENTER

DEFRA
REGULATIONS
ONLY ONE VEHICLE PERMITTED
ENTER AND EXIT ONLY
AT ANY ONE TIME
PLEASE WAIT YOUR TURN

Danger

Danger

sara

Danger

Danger

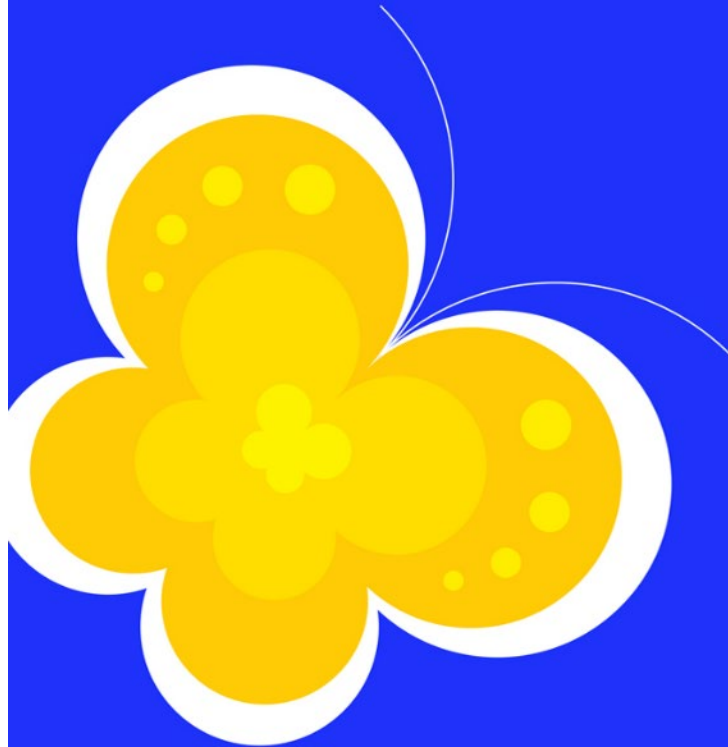
sara



Effective 1 January - 31 December 2024

EDITION 50

Live Animals Regulations (LAR)



World Organisation
for Animal Health
Founded in 1924



CITES

- IATA strengthened its cooperation with CITES through the signing of a Memorandum of Understanding in 2015.
- Specimens not shipped in accordance with the LAR make the CITES document invalid.
- IATA supports CITES' efforts to combat the illegal transport of CITES specimens.



Handling Procedures



Time management

Delay information

Environmental
Conditions

Aircraft switch

Airport congestion

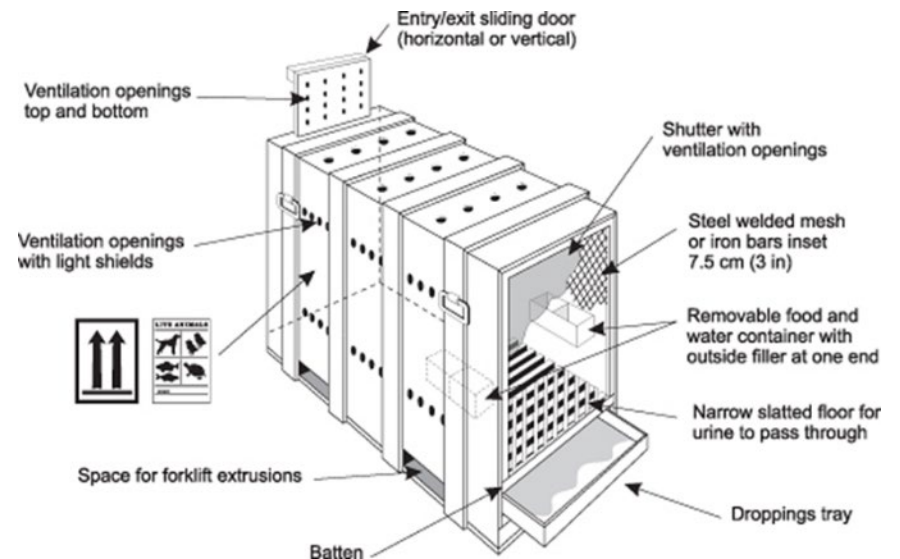
Airport facilities

Compliant Containers



Contingency Planning

- Aircraft delayed in transit
- No water container
- Straw bedding

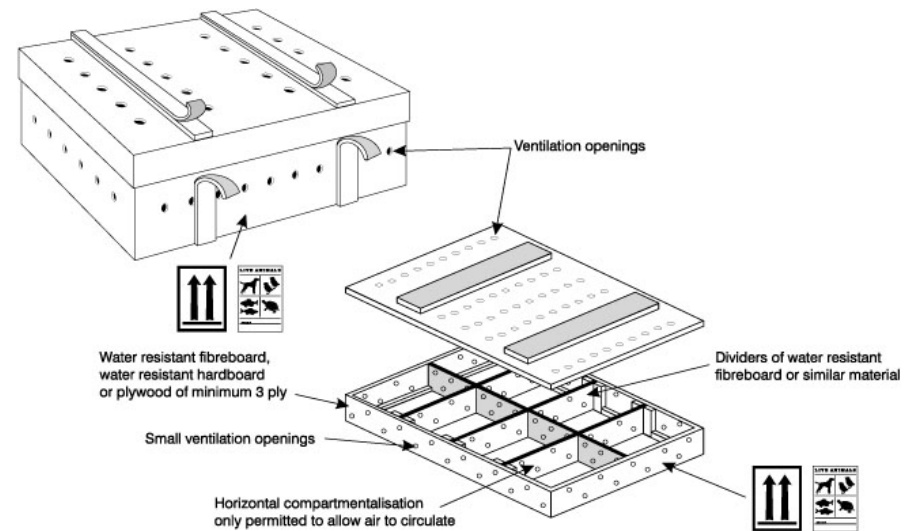
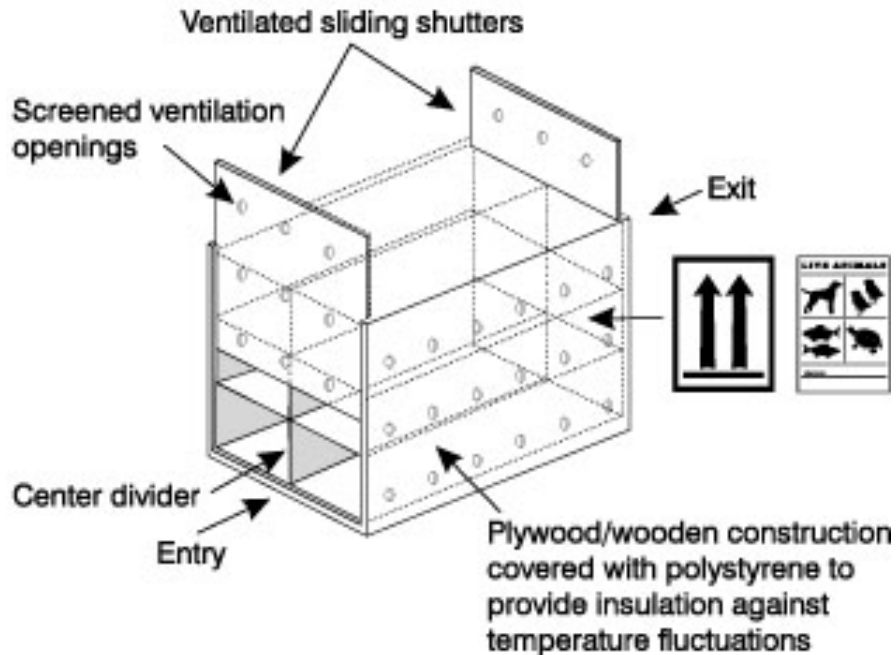


Non-Compliant Containers



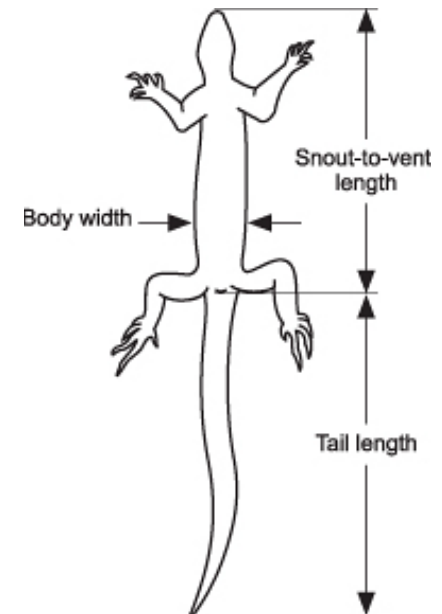
Reptile and Amphibian Containers

MULTIPLE CONTAINER (suitable for small or young animals not exceeding 50 cm [20 in] in total length)



Reptile and Amphibian Containers

Snout-vent-length (SVL)	Body-width (BW)	Maximum no. of animals per bag	Minimum bag size
≥ 20 cm (8 in)	≥ 5 cm (2 in)	1	Depending on the size of the animal
$\geq 15 < 20$ cm (6 < 8 in)	$\geq 2.5 < 5$ cm (1 < 2 in)	15	45 × 60 cm (18 × 24 in)
		10	30 × 45 cm (12 × 18 in)
$\geq 10 < 15$ cm (4 < 6 in)	< 2.5 cm (1 in)	30	45 × 60 cm (18 × 24 in)
		20	30 × 45 cm (12 × 18 in)
< 10 cm (4 in)	< 2.5 cm (1 in)	30	30 × 45 cm (12 × 18 in)



Non-Compliant Containers



Contingency for Animal Escape



- 
- Planning
 - Communication
 - Training
 - Current copy of LAR