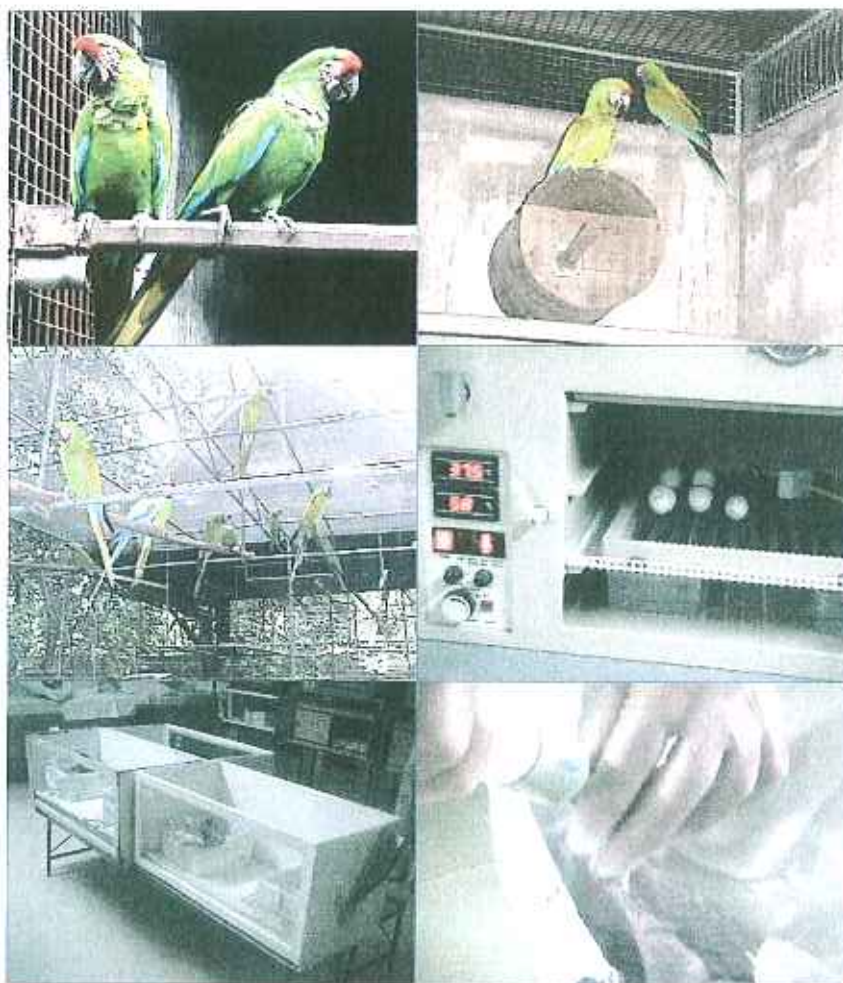


**CITES APPLICATION FOR REGISTRATION AND ACCREDITATION  
OF OPERATION BREEDING APPENDIX I SPECIES  
Military Macaw (*Ara militaris*)  
FOR COMMERCIAL PURPOSES  
(Res. Conf. 12.10)**



**Birds International, Inc.  
No. 1 Sto Nino St. Alemars Subd.  
Commonwealth Heights, Fairview, Quezon City, Philippines**

## INTRODUCTION

This proposal is being submitted to the CITES Secretariat-Switzerland through the CITES Management Authority of the Philippines, the Protected Areas and Wildlife Bureau (PAWB), for the purpose of gaining accreditation for the possible trade of Birds International, Inc.'s captive-bred, second and succeeding generations of Military macaw (*Ara militaris*)

Birds International, Inc. (BII) is engaged in the conservation and propagation of the world's rare and exotic species of psittacines, 95% of which are non-Philippine birds. It operates its activities on a six hectare farm in Quezon City, Philippines. BII is a CITES registered breeding facility (A-PH-501) breeding Appendix I species of Golden Conure (*Aratinga guarouba*) for commercial purposes.

While most breeding and conservation efforts done are government-initiated and sponsored, BII was founded privately by Antonio M. de Dios. What started as a pure hobby became a well-organized, systematic and highly technical operation to breed and conserve, which ultimately culminated in the establishment of BII.

Upon its establishment in the early 1970s, BII's principal aim was to undertake biological and conservation studies for future breeding efforts. Also, a continuous exchange of information was established with other international aviculturists.

An influx of investments followed to be able to achieve the desired breeding conditions and provide the expertise required for the successful propagation of the birds. Necessary facilities such as a veterinary hospital with twenty rooms to accommodate various cases; a laboratory with high-powered microscopes, a serum analyzer unit, a mechanical convection unit; breeding and non-breeding cages and aviaries of various designs and sizes; a 45 air-conditioned room nursery; a fully insulated hatchery with more than 40 units of Grumbach egg incubators and hatches; dietary centers; water filtration systems, sprinkler systems for birds' artificial shower and staff quarters were constructed. In addition, hundreds of animal incubators and other needed equipment, feeds and medicines were imported.

BII is jointly managed by Mr. Antonio de Dios and his daughter, Regina. They have a staff of one hundred thirty (130) people consisting of college graduates with degrees in veterinary medicine, medical technology, animal husbandry, agriculture and zoology; and a support group of maintenance people consisting of gardeners, janitors, carpenters, masons, electricians and welders. Functional groups carry out specialized activities such as hospital management, nursery management, management of facilities and equipment and the likes.

In its more than thirty years of bird conservation and propagation, BII has made substantial contributions to the accumulation of technical knowledge on bird farming. It has achieved breeding success in its Appendix I and II species, most notably the Spix's Macaw (*Cyanopsitta spixii*)

The Philippines became an active member of the Convention on International Trade of Endangered Species Flora and Fauna (CITES) in 1981. With its strong adherence to the CITES regulation of restricting the trade of wildlife species only to those that are born and bred in captivity, BII was registered as a preferred pioneer industry with the Board of Investments of the Philippines (BOI) Certificate of Registration No. 83-598 on November 16, 1983. On August 14, 1985, BII was granted Wildlife Permit No. 3 by the then Bureau of Forest Development, which allowed Birds International, Inc to export its captive-bred birds.

Net revenue generated by BII is flowed back to its operation. We continually maintain and upgrade our facilities, we hold training and seminars for our staff conducted by international professionals and we also sponsor and undertake training programs for both local and foreign veterinarians from various zoos like the Sao Paulo Zoo in Brazil, Criadouro Chaparral also in Brazil and the Philippine Eagle Conservation Program. We have allowed members of some Asian parks like the Jurong Bird Park in Singapore to observe our system of operation. We engage in exchanging ideas and information exchange with zoos and aviculturists from around the world to give the best care possible to these beautiful avian species. In the end, if such a need should arise, we are willing to be a part of their reintroduction to the wild.



**1. NAME AND ADDRESS OF THE OWNER AND THE MANAGER OF THE CAPTIVE-BREEDING OPERATION.**

Birds International Incorporated  
No. 1 Sto Nino St. Alcmars Subd.  
Fairview, Quezon City, Philippines  
Website Address: [www.birdsinternational.net](http://www.birdsinternational.net)  
e-mail: [tecbii@mkt.weblinq.com](mailto:tecbii@mkt.weblinq.com)

Mr. Antonio M. de Dios – Founder-President  
Ms. Ma. Regina de Dios-Jardineci – Manager

2. **DATE OF ESTABLISHMENT:** February 1975

3. **SPECIES BRED:** Military Macaw (*Ara militaris*)<sup>1</sup>

4. **DETAILS OF THE NUMBER AND AGE( IF KNOWN OR APPROPRIATE) OF MALES AND FEMALES THAT COMPRISE THE PARENTAL BREEDING STOCKS. ( Evidence of legal acquisition of each male and female including receipts, CITES documents, capture permits, etc)**

The company acquired a total of twenty-five (25) Military macaw with unknown age from Singapore in 1981. From this total fourteen (14) or seven (7.7) pairs became the parental breeding pairs, while seven (7) heads died during quarantine period, two (2) heads died before pairing and two (2) or one (1.1) pair died unproductive after pairing Refer to Annex A for the details.

5. **OPERATIONS LOCATED WITHIN RANGE STATES MUST PRODUCE EVIDENCE THAT THE PARENTAL STOCK WAS OBTAINED IN ACCORDANCE WITH THE RELEVANT NATIONAL LAWS ( e.g capture permits, receipts, etc) or, if imported, in accordance with the provisions of the Convention (e.g. receipts, CITES documents, etc)**

Not Applicable Birds International Inc. (BII) is located in a non-range state.

6. **OPERATIONS LOCATED IN NON-RANGE STATES MUST PRODUCE EVIDENCE THAT THE ANIMALS COMPRISING THE PARENTAL STOCK ARE: a) are pre-convention specimen( relevant dated receipts or other acceptable proof of lawful acquisition) b) have been derived from pre-convention specimens( relevant dated receipts or other acceptable proof of lawful acquisition) c) or were acquired from the range State in accordance with the provisions of the Conventions .**

All Military macaw specimens imported by BII from Singapore (non-range State) in 1981 were allowed and covered by import permits issued by BAI (Bureau of Animal Industry). BII imported Military macaw when the species was under CITES Appendix II classification. From the total acquisition of twenty-five (25) specimens, only seven (7.7) pairs was set-up to become the parental breeding stocks. Refer to Annex B for the details and Exhibit 1 and 2 for BAI issued Import Permits.

<sup>1</sup> Listed Appendix II on June 06, 1981. Elevated to Appendix I on October 22, 1987

**7. CURRENT STOCKS ( numbers, by sex and age, of progeny held in addition to the parental breeding stock above)**

The company's current stock of one hundred twenty-seven (127) specimens are composed of F1 breeding pairs at twenty-eight (28.28) pairs, F2 breeding pairs at four (4.4) pairs and sixty three (63) F2 unpaired progenies.

*Total Current Stock of Military macaw*

Age (Years)	Sex			Total
	Male	Female	Unsexed	
1	0	0	0	0
2	4	1	12	17
4	5	9	0	14
6	0	4	0	4
8	0	5	0	5
10	13	26	0	39
12	10	6	0	16
14	2	3	0	5
16	12	7	0	19
18	1	7	0	8
20	0	0	0	0
<b>Total</b>	<b>47</b>	<b>68</b>	<b>12</b>	<b>127</b>

**8. INFORMATION ON THE PERCENTAGE OF MORTALITIES IN THE DIFFERENT AGE GROUPS AND WHERE POSSIBLE, BETWEEN MALES AND FEMALES.**

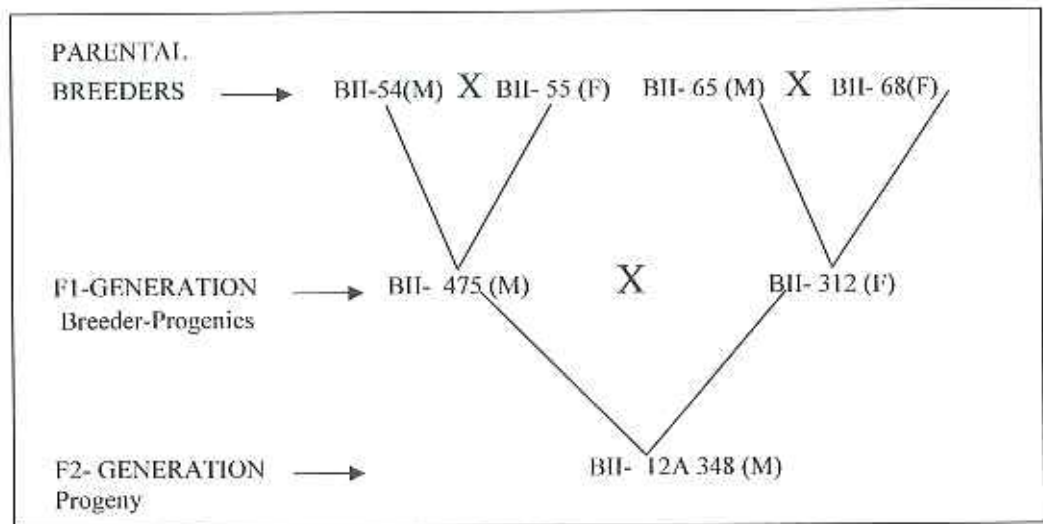
From the total production of one hundred twenty two ( 122) F1-generation progenies, fifty three (53) percent died, while forty seven (47) percent are the remaining live progenies. Refer to Annex C for the details.

From the total production of one hundred eighty four (184) F2-generation progenies, thirty three (33%) percent died, while sixty seven (67%) percent are the remaining live progenies. Refer to Annex C for the details.

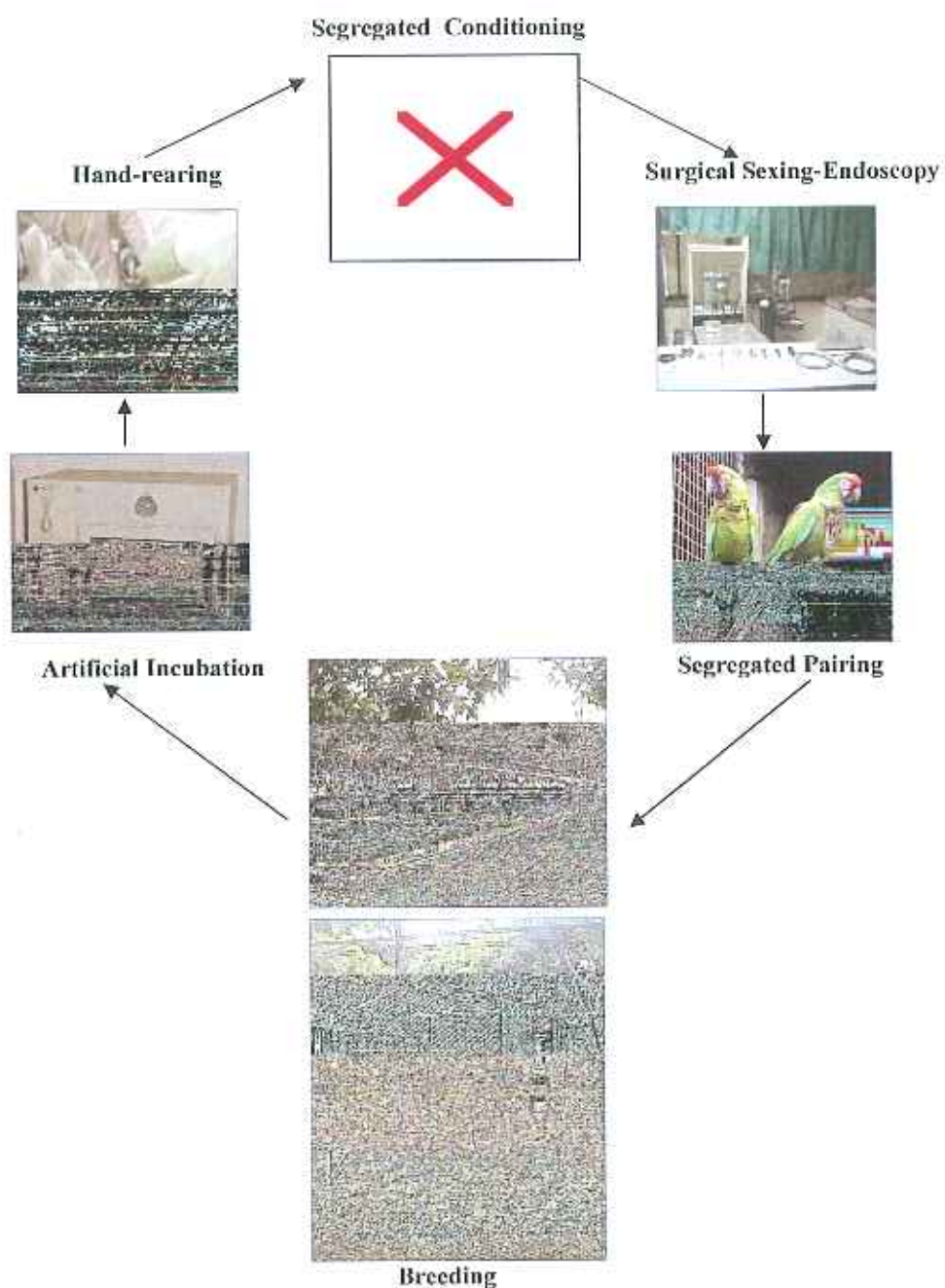
9. DOCUMENTATION SHOWING THAT THE SPECIES HAS BEEN BRED TO SECOND GENERATION BREEDING OFFSPRING (F2) AT THE FACILITY AND THE DESCRIPTION OF METHOD USED.

When Birds International started breeding Military macaw, the company decided to practice the CLOSED CYCLE BREEDING AND PRODUCTION SYSTEM. This production system requires an initial take from the wild but after the initial establishment no wild specimen will be added or taken from the wild to augment the existing parental breeding pairs. Likewise, the company follows a SEGREGATION STRATEGY of progenies coming from various generations. Segregation will ensure grouping of progenies coming from the same generation and will eliminate chances of mixing individuals from the different generations therefore making pairing of similar generation easier and the realization of F2 and F3 generation attainable.

Diagram below will show how BII was able to achieve F1 and F2 generation from two (2) pairs of Parental Breeding Pair.



Presented below is the CLOSED CYCLE BREEDING AND PRODUCTION SYSTEM for the development of Military macaw F1 and F2 generation progenies.





STAGES OF BREEDING	DESCRIPTION
Segregated Conditioning	<ul style="list-style-type: none"> <li>Birds with varying bloodlines are placed in a flight aviary where they can socialize and or bond with other birds (same species). This stage is the maturation period. Usually it will take three (3)-five(5) years to attain reproductive maturity.</li> </ul>
Sexing	<ul style="list-style-type: none"> <li>All unrelated, mature and with good quality birds are subjected to laparoscopy, to check maturity of reproductive organs such as the ovary/testes. This procedure is required to ensure proper pairing of sexually mature individuals.</li> </ul>
Segregated Pairing	<ul style="list-style-type: none"> <li>Sexually compatible male and female will be set-up in either a Large Portable Cage or inside a Breeding Aviary. Newly paired breeder will be monitored and any aggression between the pair will be taken into consideration for possible break-up to avoid injury of either the male or the female.</li> </ul>
Segregated Breeding	<ul style="list-style-type: none"> <li>Nest boxes with nesting materials are installed for egg-laying and special diet rich in Calcium will be provided. During breeding season a daily check-up of nest-boxes is required. However, noise and any other form of disturbance is avoided if not minimized.</li> </ul>
Artificial Incubation	<ul style="list-style-type: none"> <li>Eggs are carefully pulled-out from nest boxes for cleaning and disinfection after which the eggs are placed inside a Grumbach Egg Incubator for artificial incubation. Monitoring is done daily. Incubation is between 25-28 days.</li> </ul>
Hand-Rearing	<ul style="list-style-type: none"> <li>Hatchlings are carefully cleaned and placed inside AICU-Animal Intensive Care Unit at the Nursery. A culture test of the egg shell is required if the hatchlings exhibited any abnormal condition during incubation or immediately after hatching. Specially formulated diet will be given from day one until the bird is fully weaned. Weaning is between four (4) –eight (8) months.</li> </ul>

10. IF THE OPERATION HAS ONLY BRED THE SPECIES TO THE FIRST GENERATION, DOCUMENTATION SHOWING THAT THE HUSBANDRY METHODS ARE THE SAME AS, OR SIMILAR TO THOSE THAT HAVE RESULTED IN SECOND-GENERATION OFFSPRING ELSEWHERE.

Not Applicable – The facility was able to produce up to second (F2) and going to third (F3) generation production.

**11. PAST, CURRENT, AND EXPECTED ANNUAL PRODUCTION OF OFFSPRING, TOGETHER WITH THE INFORMATION ON THE PERCENTAGE OF: a) Female producing offspring each year b) Unusual fluctuations in the annual production of offspring ( including an explanation of the probable cause).**

Year	Total Percentage of Productive Female			Production According to Generation			Total Production
	Parental Breeding Pair (7.7)	F1 Breeding Pair (28.28)	F2 Breeding Pair (10.10)*	F1	F2	F3	
1985	2%	0	0	5	0	0	5
1986	5%	0	0	7	0	0	7
1987	6%	0	0	16	0	0	16
1988	7%	0	0	16	0	0	16
1989	6%	0	0	17	0	0	17
1990	7%	0	0	18	0	0	18
1991	4%	1%	0	11	3	0	14
1992	6%	6%	0	12	11	0	23
1993	5%	6%	0	8	22	0	30
1994	4%	14%	0	12	35	0	47
1995	0	11%	0	0	12	0	12
1996	0	4%	0	0	7	0	7
1997	0	5%	0	0	14	0	14
1998	0	3%	0	0	10	0	10
1999	0	2%	0	0	6	0	6
2000	0	4%	0	0	16	0	16
2001	0	8%	0	0	21	0	21
2002	0	11%	0	0	10	0	10
2003	0	9%	0	0	17	0	14
2004	0	12%*	3*	0	22*	2*	24*
2005	0	14%*	7*	0	25*	6*	31*
2006	0	14%*	10*	0	28*	8*	36*

\* = projected figures

There were no sign of unusual fluctuations during the entire production of this species. The eventual stop of F1 production in 1994 was not considered unusual since some of the parental breeders are showing signs of old age.

**12. AN ASSESSMENT NEED FOR, AND SOURCE OF, ADDITIONAL SPECIMENS TO AUGMENT THE BREEDING STOCK TO INCREASE THE GENETIC POOL OF THE CAPTIVE POPULATION IN ORDER TO AVOID ANY DELETERIOUS INBREEDING.**

Our current population of F1P-BR and the additional F2P-BR breeding stocks are sufficient sources of bloodlines to sustain our present captive breeding operation. In relation, based on the documented Military macaw's life span in captivity, which is forty-seven (47) years, the company can expect a very conservative productive lifespan of this species for the next ten (15) to twenty (25) years. Proper management of the progenies bloodlines through the use of a specimen control number using computerized relational database guides BII personnel to avoid pairing of related birds.



BII selects unrelated, mature and superior quality captive bred produced at the center. Contacts with other breeding operations worldwide allow the trade and exchange of this species thus eliminating the need to collect this species from the wild population.

### 13. TYPE OF PRODUCT EXPORTED

The products exported are of live captive-bred birds. Each bird is individually marked, either by closed leg-band or by microchip implant and inspected by the technical staff of the Philippine Protected Areas and Wildlife Bureau (PAWB) which keeps a record of each bird bred from the time the egg hatched.

*Close-Banded (Male)*



*Close-Double Banded (Female) Export Box*



### 14. DETAILED DESCRIPTION OF THE MARKING METHODS USED FOR THE BREEDING STOCK AND OFFSPRING AND FOR THE TYPES OF SPECIMENS THAT WILL BE EXPORTED.

#### 14.1 CLOSE LEG-BAND and OPEN LEG-BAND

A closed stainless steel leg-band with unique number series is used for all captive-bred progenies and breeding stocks at the center. Closed leg-band is usually attached ten to fifteen days (10-15) after hatching. The closed leg-band identification is being used by the Philippines CITES-CMA to identify the birds intended for export. Also this is the basis for the issuance of CITES export permit.

*Close Leg-bands & Open Leg-band (1/2")*



An open stainless steel leg-band is attached additionally to a female captive bred-progeny after surgical sexing. This will clearly identify the surgically sexed female because it is fitted with two leg-bands, a closed band on the right foot and an open band on the left.

#### 14.2 MICROCHIP IMPLANT

An ISO microchip implant is also used for the identification of captive-bred progenies intended for export.



**15. DESCRIPTION OF THE INSPECTION AND MONITORING PROCEDURES TO BE USED BY THE CITES MANAGEMENT AUTHORITY TO CONFIRM AND IDENTIFY THE BREEDING STOCK AND THE OFFSPRING AND TO DETECT THE PRESENCE OF UNAUTHORIZED SPECIMENS HELD AT OR INCORPORATED WITH THE OPERATION OR PROVIDED FOR EXPORT.**

The following procedures are being adopted by the Protected Areas and Wildlife Bureau (PAWB), the CITES Management Authority in monitoring the captive breeding operations of BII;

1. The collection of wildlife species from the natural habitat for breeding purposes is allowed only under a Wildlife Collector's Permit (WCP) issued by the PAWB. Exotic species maybe acquired from breeders duly accredited and registered with PAWB or through importation under an import permit issued by the said agency;
2. A Wildlife Farm Permit (WFP) is also required for the establishment of breeding farms in the country. A WFP holder is required to maintain and provide breeding facilities suitable for the avian species to be maintained and spacious enough to ensure the welfare of the birds. Likewise, leg bands for the identification of the breeders and progenies are being checked/verified by the CMA.
3. The breeding farm is required to maintain a record for each species maintained in the farm which shall include the data specified below. The record is periodically inspected and the stocks verified by the CMA. Only the recorded/validated animal stocks in the farm as registered in the book are allowed for trade/disposition.
  - a. founding/breeder stocks- species,origin, age (date laid and date hatched) generation, sex, quantity, source, marking (leg-abnd, microchip etc) parental leg-banf number if any.
  - b. progenies – species, origin, generation, age ( date laid and date hatched) sex, quantity, parental legband number.
  - c. additional acquisition – local purchase, importation, exchange or donation, species, source, generation, origin, age, quantity, parental leg-band, receipt, permit if imported
  - d. mortality /accidental escape – species, source, generation, origin, age, generation, quantity, parental leg-band number
  - e. hospital, nursery, incubator apparatus, and nesting area shall provide the same information as above.



4. The movement of the birds from the breeding farm to any point within the territorial jurisdiction of the Philippines or from the collection area to the farm should be accompanied by a local transport permit issued by the concerned field office of the CMA;
5. Only captive-bred wildlife species/sub-species produced in the breeding farms authorized under WFP are allowed for trade. Birds intended for export are inspected/validated by PAWB and verified against the production report regularly submitted by the establishment to the CMA. Export permits are issued only when the results of the inspection and verification conform with the requirements of the CMA;
6. The establishment is also required to observe cleanliness and sanitation in the maintenance of the breeding farm and facilities. This is to prevent possible contamination and /or spread of pests and/or diseases which will affect the survival of both the captive-bred specimens or other wildlife species which maybe found in the surrounding area.
7. Cleanliness and Sanitation- The breeding operation shall observe cleanliness and sanitation in the maintenance of the breeding farm and facility. This is to prevent possible contamination and /or spread of pests and/or diseases which may affect the survival of both captive-bred and the wild population of animals and other wildlife species in the area.

**16. DESCRIPTION OF THE FACILITIES TO HOUSE THE CURRENT AND EXPECTED CAPTIVE STOCK, INCLUDING SECURITY MEASURES TO PREVENT ESCAPES AND/OR THEFTS. DETAILED INFORMATION SHOULD BE PROVIDED ON THE NUMBER AND SIZE OF THE BREEDING AND REARING ENCLOSURES, EGG INCUBATION CAPACITY, FOOD PRODUCTION OR SUPPLY, AVAILABILITY OF VETERINARY SERVICES AND RECORD KEEPING.**

The list of equipment and facilities presented below play a very vital role in the husbandry management and breeding of all Military macaw at Birds International.



## Facilities at Birds International

Description	Number of Units	Description	
Hatchery-I & II	2	Incubation	86m <sup>2</sup>
Nursery I-V	5	Hand-Rearing	1700m <sup>2</sup>
Hanging Cages			
Small	30	Weaning/Rearing	.92m <sup>3</sup> / cage
Medium	120	Weaning/Rearing	2.63m <sup>3</sup> /cage
Large	60	Weaning/Rearing	4.46m <sup>3</sup> /cage
Mini-Flight	30	Conditioning Newly Weaned Birds	400m <sup>2</sup>
Conditioning Flight	30	Conditioning Newly Weaned Birds	1750m <sup>2</sup>
Breeding Aviary	27	Breeding	1500m <sup>2</sup>
Portable Breeding Cages			
Small	270	Breeding	3m <sup>3</sup> / cage
Medium	250	Breeding	6m <sup>3</sup> / cage
Large	100	Breeding	8m <sup>3</sup> /cage
Food Preparation	2	Food Production for Breeders/Conditioning	180m <sup>2</sup>
Hospital	3	Patient Treatment/Recovery	577m <sup>2</sup>
Laboratory	1	Specimen culture	13.5m <sup>2</sup>
Warehouse	2	Storage	480m <sup>2</sup>
Cold Storage-Warehouse	2	Storage	70m <sup>2</sup>
Administration Building	1	Record Keeping/Documentation	252m <sup>2</sup>
Caretaker's Quarter	4	Accommodation	1,462m <sup>2</sup>
Dining Hall	1	Caretaker's Dining Area	25m <sup>2</sup>
Quarantine Building	2	Treatment /Isolation Area	730m <sup>2</sup>
Laundry Building	1	Laundry	60m <sup>2</sup>

## Equipment at Birds International

Description	Quantity	Purpose
Egg Incubators	30	Artificial Incubation
Egg Candles	5	Egg Development Indication
AICU (Animal Intensive Care Units)	271	Hand-rearing
Walk-In Freezer	1	Food Storage
Endoscope	2	Endoscopy/Surgical Sexing
Photo-microscope	4	Bacteria Identification
Mechanical Convection Incubator	1	Bacteria Culture
Surgitron	1	Surgery
Airconditioning Units	50	Temperature Control
Humidifier	2	Humidity Control
Microchip Reader	3	Microchip Number Identification
Computers (CPU+Monitor)	7	Record Keeping
Power Generators ( 90 KVA)	3	Stand-by Power Supply
Water Filtration (UV-Light)	1	Water Disinfection
Fork-Lift	1	Garbage Collection/Transport
Power Sprayer	5	Cleaning Cages
Mini-Van	1	Bird Export
Dump Truck	1	Materials/Equipment Transport
Reflotron	1	Blood Value Analyzer
Centrifuge	2	Blood Sample Preparation
Gas-Anesthesia Unit	2	Inhaled-Anesthesia
Digital Camera (mpeg/jpeg)	2	Picture/Documentation
Refrigerators	15	Food Storage

### HATCHERY EQUIPMENT AND FACILITIES



Hatchery I

Hatchery II

### NURSERY EQUIPMENT AND FACILITIES

Nursery I & II

Nursery III

Nursery IV

Nursery V



### CONDITIONING, BREEDING & PORTABLE BREEDING FACILITIES



### FOOD PREPARATION EQUIPMENT AND COLD STORAGE FACILITIES



**Kitchen I**



**Kitchen II**



**Chiller Warehouse**

## **HOSPITAL AND LABORATORY EQUIPMENT AND FACILITIES**

**Hospital I & II**



**Laboratory**





## HOSPITAL AND LABORATORY EQUIPMENT AND FACILITIES



**Mechanical Convection Incubator**



**Photo-microscope**



**Reflotron machine**



**Centrifuge**



**Mobile Gas-Anesthesia machine**



**Examination table**



**Surgitron machine**



**Endoscope**

## WATER TREATMENT AND FILTRATION/ LAUNDRY FACILITIES



**Laundry room**



**Washing/Drying machine**



**Water Filtration/ UV Light Treatment & Storage**



### STAND-BY POWER GENERATOR SET AND TRANSPORT VEHICLE



### CARETAKER'S QUARTERS AND DINING HALL



### ADMINISTRATION FACILITIES



Prevention of the possible escape of birds is one of the many considerations in a cage design at BII. Almost all the cages used at the center can be serviced without the need to go inside to deliver the food to the birds. Food and water dishes are provided with through a especially designed hatches that can be pulled out or slide out during feeding. This design makes the escape of the birds inside the cage almost impossible.

#### *Food Tray*



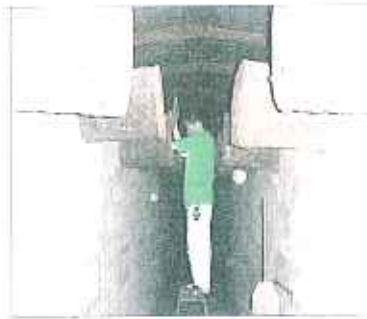
#### *Power-Pressure Spraying*





Cleaning of the cage can usually be achieved by pressure hosing from the outside of the cage. Nest-boxes are designed and situated in such a position that they also can be examined without the need to enter the cage.

*Nest Box-Outside View(Alley)*



*Nest Box- Inside View*



On few occasions, when it is necessary to enter the cage to catch and examine more closely the bird, a special safety cage or cage trap is used to enter the main cage and prevent any possibility of escape.

Birds inside the breeding aviaries are housed in a completely enclosed building from which they cannot escape, even if they should come out of their cages. Breeding aviaries are secured through a screened double door.

Great care is taken whenever birds are being transferred to different facilities. These birds are always carried inside a transfer box with lock before going out of the aviary and the box is never opened unless it is fully secured inside the destination aviary.

*Cage Trap*



*Aluminum Transport Box*



The advent of technological breakthrough in the field of PC (Personal Computers) in the early 1980's enhanced and changed the old master list. Presently, the company has a relational database system that aids its staff in all aspects of avian management. This database was further enhanced with the use of C++, SQL and Visual Basic programming language. The database system at present can alert user not to pair related progenies as it does not accept records and data of related progenies intended to be paired.



**17. DESCRIPTION OF THE STRATEGIES USED BY THE BREEDING OPERATION OR OTHER ACTIVITIES THAT CONTRIBUTE TO IMPROVING THE CONSERVATION STATUS OF WILD POPULATION(S) OF THE SPECIES.**

The company is committed to support any effort of the Philippine government or any foreign government and non-government organizations to improve conservation status of the Military macaw. The company's vast experience on the conservation of the species like Spix's macaw and the Philippine Eagle to name a few will likewise offer a great advantage to any conservation effort that will be initiated on this particular species.

**18. ASSURANCE THAT THE OPERATION SHALL BE CARRIED OUT AT ALL STAGES IN A HUMANE (NON-CRUEL) MANNER.**

The current success of BII in captive breeding not to mention other Appendix 1 species is a clear manifestation that indeed breeding operation at BII is carried out with utmost and humane manner. The company's commitment to follow the existing Animal Welfare Act of the Philippines and the Wild Life Resources Conservation and Protection Act is also an assurance that the company will protect, care and treat all species in a humane and non-cruel manner.

## Annex A - Military Macaw

Species Count	Legband Number Number	Sex	Age	Source ISO-Code	Evidence of Legal Acquisition		Comments
					Import Permit	Date Issued	

1	NLB	U	UNK	SG	113	1981	DQ
2	NLB	U	UNK	SG	113	1981	DQ
3	NLB	U	UNK	SG	113	1981	DQ
4	NLB	U	UNK	SG	113	1981	DQ
5	NLB	U	UNK	SG	113	1981	DQ
6	4	U	UNK	SG	113	1981	DaP
7	11	U	UNK	SG	113	1981	DaP
8	12	M	UNK	SG	113	1981	DaP
9	15	M	UNK	SG	113	1981	DaP
10	33	F	UNK	SG	113	1981	DaP
11	46	F	UNK	SG	162	1981	DaP
12	54	M	UNK	SG	162	1981	A
13	65	M	UNK	SG	162	1981	A
14	71	M	UNK	SG	162	1981	A
15	94	M	UNK	SG	162	1981	A
16	111	M	UNK	SG	162	1981	A
17	120	M	UNK	SG	162	1981	A
18	140	M	UNK	SG	162	1981	A
19	55	F	UNK	SG	162	1981	A
20	68	F	UNK	SG	162	1981	A
21	73	F	UNK	SG	162	1981	A
22	98	F	UNK	SG	162	1981	A
23	115	F	UNK	SG	162	1981	A
24	133	F	UNK	SG	162	1981	A
25	141	F	UNK	SG	162	1981	A

## Legend

DQ =	Died during Quarantine
DaP =	Died After Pairing
A =	Alive
UNK =	Unknown
U =	Unsexed
SG =	Singapore

Annex B - Military Macaw

Species Count	Legband Number	Sex	Age	Source ISO-Code	Evidence of Legal Acquisition	
					Import Permit	Date Issued
1	54	M	UNK	SG	162	1981
2	65	M	UNK	SG	162	1981
3	71	M	UNK	SG	162	1981
4	94	M	UNK	SG	162	1981
5	111	M	UNK	SG	162	1981
6	120	M	UNK	SG	162	1981
7	140	M	UNK	SG	162	1981
8	55	F	UNK	SG	162	1981
9	68	F	UNK	SG	162	1981
10	73	F	UNK	SG	162	1981
11	98	F	UNK	SG	162	1981
12	115	F	UNK	SG	162	1981
13	133	F	UNK	SG	162	1981
14	141	F	UNK	SG	162	1981

Legend

UNK = Unknown  
U = Unsexed  
SG = Singapore



Annex C - Information on the Percentage of Mortalities in the Different Age Groups (Male & Female)

I. F1 Total Production. Year: 1985-1994

	Hds.	%
Mortalities	65	53
Live	57	47
Total	122	100

Classification of Mortalities ( Age Groups)	Sex Classification						Total	
	M		F		U		Hds	%
	Hds	%	Hds	%	Hds	%		
1day-12 months	0	0	0	0	25	24	25	20
12 months - 48 months	4	4	15	7	0	0	19	16
48 months and Above	10	9	11	10	0	0	21	17
							65	53

II. F2 Total Production. Year: 1991-Present

	Hds.	%
Mortalities	60	33
Live	124	67
Total	184	100

Classification of Mortalities ( Age Groups)	Sex Classification						Total	
	M		F		U		Hds	%
	Hds	%	Hds	%	Hds	%		
1day-12 months	0	0	0	0	23	13	23	13
12 months - 48 months	7	4	13	7	0	0	20	11
48 months and Above	8	4	9	5	0	0	17	9
							60	33

Republic of the Philippines  
Ministry of Agriculture  
BUREAU OF ANIMAL INDUSTRY  
Manila

Import Permit  
(Wild exotic and other pets and birds)

IMPORT PERMIT NO. 113

Importer

Mr. Antonio de Dios

99 Timog Ave., Quezon City

Date issued 1981-05-11  
Expiry date June 30, 1981  
Extension \_\_\_\_\_  
Origin Singapore  
Purpose net

EXHIBIT 4

## DESCRIPTION OF ANIMALS/BIRDS

Species : Type : Sex : Age : Number

birds parrots ten (10)

**CERTIFIED TRUE COPY**

*Margaret W. Abbott*  
 MARGARET W. ABBOTT  
 RECORDS OFFICER II 1/2/12 ten (10)

The importation of the animal(s) described above is hereby granted subject to the following:

A. For Exotic Zoo, Marine and Laboratory Animals:

That said animals must come from or must have been raised in a government accredited farm or zoo or have been confined in such farm or zoo for not less than ninety (90) days from the date of capture from the wild state.

B. For Zoological, Research, Performing and Theatrical Birds:

That said bird must come from or raised in a government accredited breeding farm, laboratory, or aviary or have been confined in such establishments for not less than 90 days from the date of capture from wild state.

C. For Pets, Circus or Show Animals:

That said animals must have a valid vaccinations against dangerous infectious disease affecting their species.

D. General Conditions:

1. That the said animals and birds should be accompanied by a Veterinary Health Certificate issued shortly (not more than 10 days) before shipment by the concerned government veterinary authority of the country of origin stating that the said animals and/or birds have been personally examined by an authorized government veterinarian and found to be free from dangerous communicable animal disease or exposure thereto, and further states that there has been no incidence of dangerous infectious animal disease at the farm or establishment of origin for the last six months preceding shipment.



2. That should the animals/birds arrive at the port of entry in the Philippines without the accompanying prescribed Veterinary Health Certificate, said animal/bird shall be quarantined for a period determined by the Director, Bureau of Animal Industry and those showing signs of dangerous communicable diseases of animals and birds shall be condemned and disposed off in any manner deemed appropriate by the Director or his duly authorized representative. No compensation shall be paid to any animal destroyed.

3. The permittee shall pay to the Bureau of Animal Industry the following fees:

- a) For issuance of this Import Permit - P 2.00 1st (per Sec VII, Animal Industry Adm. Order No. 6-14);
- b) For inspection and issuance of landing permit - P 5.00 1st to be paid upon arrival of the said animals at the port of entry (per Sec. I, Anim. Ind. Adm. Order No. 6-14).

4. This permit is subject to cancellation should any dangerous communicable animal disease break out at the place of origin or may be revoked at any time before the expiration date if the interest of the government so requires.

Conforme:

**PAID**

O. R. No. 8062131

AMOUNT P 2.00

DATE 5/10/81

6/vca22/481

*Salvador M. Escudero*  
SALVADOR M. ESCUDERO  
Assistant Director

7/16  
5-11-81

**PAID**  
O. R. No. 8062131  
AMOUNT P 2.00  
DATE 5/10/81

**CERTIFIED TRUE COPY**

*Justine*  
MAREARITA M. AGOSTO  
RECORDS OFFICER II 7/2/81







ORIGINAL RECEIVED  
 CoP14 Doc. 47  
 Annex 5  
 BY *[Signature]*  
 ADML 5 *7/13/81*

2. That should the animals/birds arrive at the port of entry in the Philippines without the accompanying prescribed Veterinary Health Certificate, said animal/bird shall be quarantined for a period determined by the Director, Bureau of Animal Industry and those found showing signs of dangerous communicable diseases of animals and birds shall be condemned and disposed off in any manner deemed appropriate by the Director or his duly authorized representative. No compensation shall be paid to any animal destroyed.

3. The permittee shall pay to the Bureau of Animal Industry the following fees:

- a) For issuance of this Import Permit - 2.00 1st 20 hd. (per Sec. VII, Animal Industry Adm. Order No. 6-14);
- b) For inspection and issuance of landing permit - 5.00 1st 5 hd. to be paid upon arrival of the said animals at the port of entry (per Sec. I, Anim. Ind. Adm. Order No. 6-14); 0.50 ea. for excess

4. This permit is subject to cancellation should any dangerous communicable animal disease break out at the place of origin or may be revoked at any time before the expiration date if the interest of the government so requires.

Conforme:

*[Signature]*

PAIMAN P. ESCUDERO  
 SALVADOR P. ESCUDERO  
 Director  
*7/13/81*

6/9882/4/81  
 B. P. P. P. P. P.  
 B. P. P. P. P.

**PAID**  
 O. P. No. 5067  
 AMOUNT 2.00  
 DATE 7-13-81

**CERTIFIED TRUE COPY**  
*[Signature]*  
 MARGARITA H. AGOOT  
 RECORDING OFFICER *7/13/81*